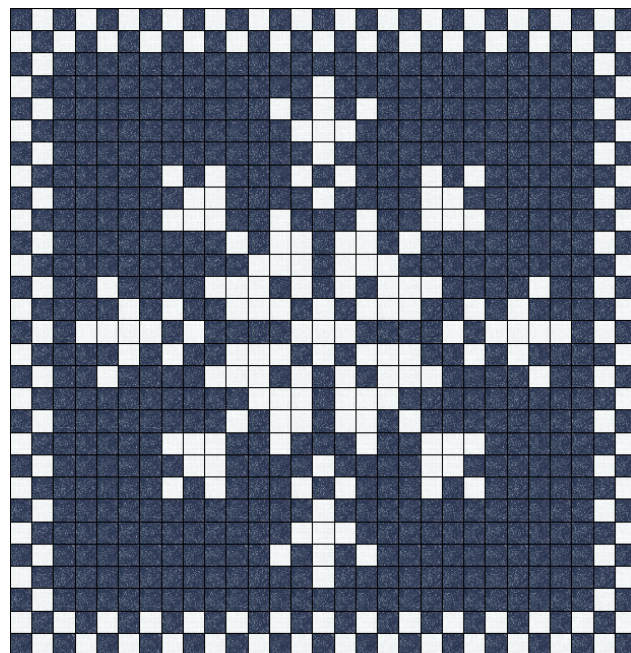
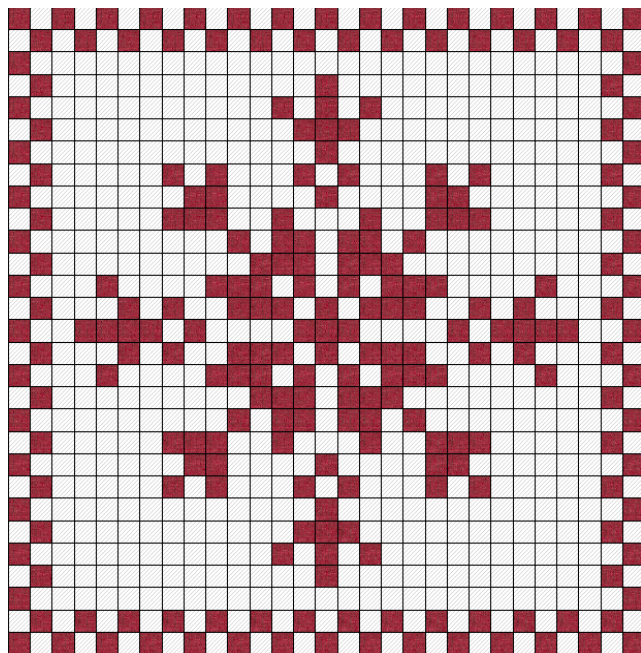


# Snuggly Snowflake



**Class Title:** Snuggly Snowflake

**Included in Materials Fee:** Snuggly Snowflake Pattern, EasyPiecing Instructions, Extra EasyPiecing Instructions, 7 panels of EasyPiecing Grid: \$45

\*\*\*Optional Fabric kits available at [etsy.com/shop/HeathersQuiltsnKits](https://www.etsy.com/shop/HeathersQuiltsnKits)

**Class Description:** Make this darling snowflake quilt with NON TRADITIONAL PIECING! Quilt top finishes at 58"x58", 43"x43", or 29"x29". Enjoy perfect corners and a flat stable quilt top!

**Supplies:** fabric, Elmer's glue stick, Sewing Machine is optional. May not need in class.



You will need 7 Panels of Tensisters EasyPiecing Grid, according to the size you want to make.

For example: if you want to make a 58"x58" inch quilt, you will need 7 panels of **2 inch finished** Easy Piecing Grid **OR** 43"x43"- 7 panels of **1.5 inch finished**, **OR** 29"x29"- 7 panels of **1 inch finished** grid. (Grid is Included in Material Fee. Please email me the Size you would like.)

**Fabric Supplies:** Choose any color you would like for your snowflake and background. **Cut 2½ inch squares** for 58"x58", **Cut 2 inch squares** for 43"x43" or **1.5 inch squares** for a 29"x29" quilt top.

. You could even go scrappy!

**Before class:** Cut **2½ inch squares** for 58"x58", **Cut 2 inch squares** for 43"x43" or **1.5 inch squares** for a 29"x29" quilt top.

	<u># of squares</u>	<u>Yardage</u>		
		2 inch finished	1.5 inch finished	1 inch finished
	241	1 + $\frac{1}{8}$ yd	$\frac{3}{4}$ yd	$\frac{3}{8}$ yd
	600	3 yds	2 yds	1 + $\frac{1}{8}$ yd

Instructor: Heather Dunn Email: [hdizzle71@gmail.com](mailto:hdizzle71@gmail.com) Instagram: @heathersquilts