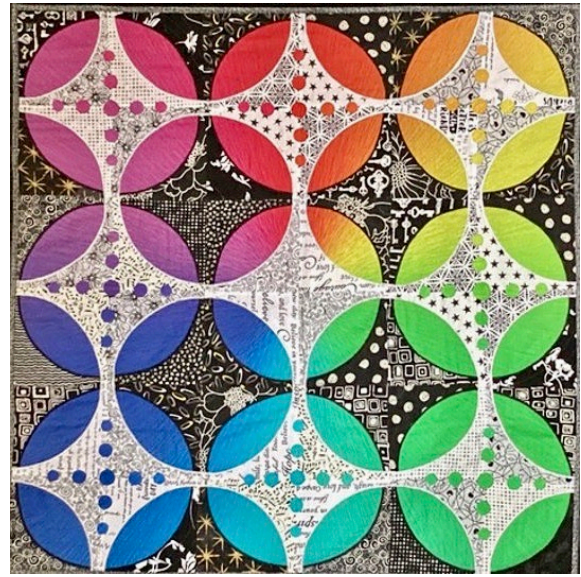


## Supply List

# Double Vision: Curves and Circles That Create Wonderful Illusions

There are three layers in the quilt as pictured

- Layer 1 - the colorful fabric on the bottom
- Layer 2 - the middle layer fabrics are black with white
- Layer 3 – the top layer fabrics are white with black



- **Layer 1** needs to be a MINIMUM of 36 1/2" x 36 1/2". Here are some suggestions:

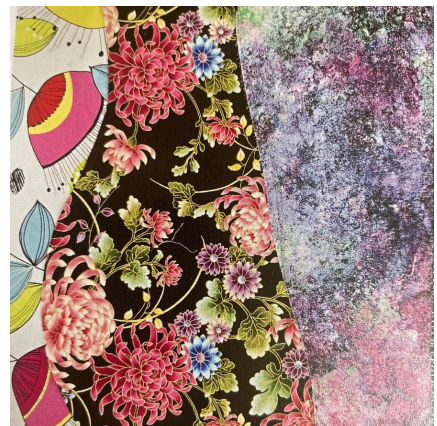
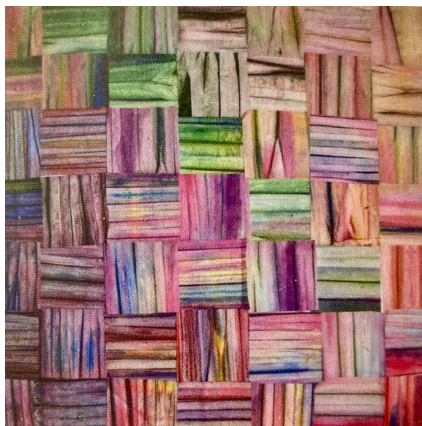
Hand-dyed, shibori and ombre fabrics work well with this technique



A pieced background:

If you decide to go this route: Cut squares at 6 1/2". You'll need a total of 36 squares (6 rows of 6).

**Or** any combination of pieced fabric that will result in a min of 36 1/2" x 36 1/2".  
***You'll need to piece the background PRIOR to class.*** Examples below.



**NOTE 1:** If you choose to piece layer 1 it needs to be done before class in order for you to keep up with the others

- \* **For layer 2**, you can use 1 yard of black with white fabric  
**OR** 12-18 fat quarters of *different* black with white fabrics  
**OR** your color choice that coordinates with your layer 1

\*

- \* **For layer 3**, you can use 1 yard of white with black fabric  
**OR** 12-18 fat quarters of *different* white with black fabrics  
**OR** your color choice that coordinates with your layer 1

You *do not* have to use black & white prints for layers 2 and 3. You can use any color(s) you'd like to coordinate with the fabric you choose for layer 1.

**NOTE 2:** IT IS INCREDIBLY IMPORTANT TO **HEAVILY** STARCH AND PRESS YOUR FABRIC **BEFORE** CLASS. PRESS – DON'T IRON! YOU ARE STABILIZING THE FABRIC BEFORE CUTTING. I use StaFlo liquid starch mixed 50/50 with water or spray starch. Soak the fabric, squeeze (don't wring out) out excess and dry in dryer. Then press.

- \* 28mm rotary cutter with a new blade – the smaller size cuts curves sooo much better than a 45mm
- \* White, black and medium gray thread (or thread to coordinate with layers two and three)
- \* Basic sewing supplies (scissors, seam ripper, pins, etc)
- \* Medium size cutting mat. If you have a rotating cutting mat, bring that one
- \* 6"x12" rulers
- \* Glue pen with a few refills
- \* 505 temporary spray or any other temporary spray adhesive you prefer
- \* If you have a foam core or flannel covered board (36" x 36"), bring it to use as a design wall. Alternately you can tape a piece of flannel or batting (36" x 36") to the wall. Tape will be provided.

If you have questions or need additional information, please don't hesitate to call me. I love to chat with quilters!

Debby Walters 281-610-2543